

## Vacuum valve HIVR

Maximum flow rate: 240L/min(ANR)

# HANWHA



Utility

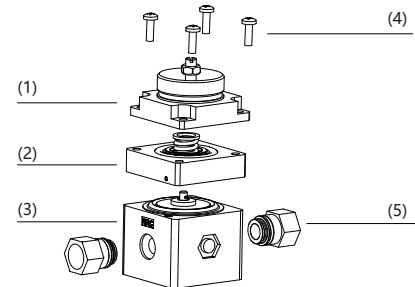
### Product characteristics

- \*Mechanical adjustable pressure reducing valve
- \*Targeted supply of compressed air through precise pressure regulation
- \*Used for detection and measurement, such as leak detection



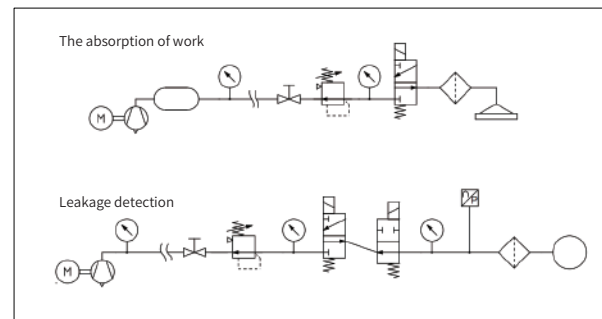
### Product structure

- \*Top fixing piece (1)
- \*Valve body fixing parts (2)
- \*Subject (3)
- \*Fixed nut (4)
- \*G3/8 quick change pipe joint (5)



### Product advantages

- \*Mechanical adjustment has extremely high repeatability accuracy
- \*The set value can maintain extremely high accuracy
- \*Can be installed in any position



# Vacuum valve

## HIVR

**HANWHA**



Utility

Maximum flow rate: 240L/min(ANR)

### HIVR Ordering NO

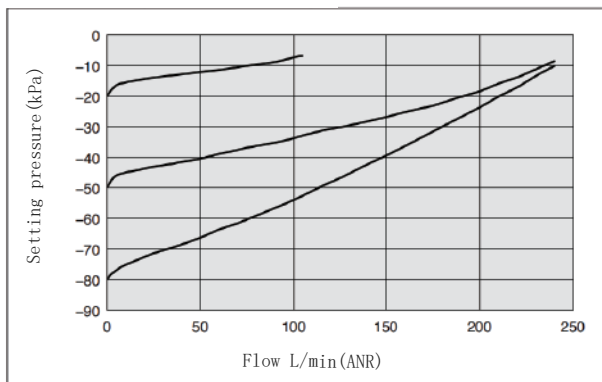
HIVR	20	FG03
1	2	3

1-Series	2-Subject	3-Screw thread
HIVR	Valve	20
		Maximum flow rate 240L/min(ANR)
		F Internal thread
		G03-G3/8

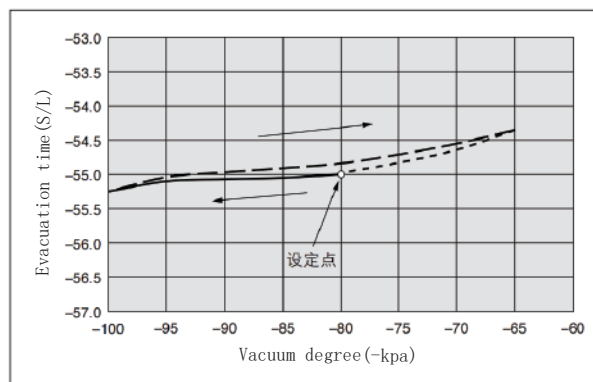
### HIVR Technical Data

Models	Use fluid	Set pressure range <sup>1)</sup> [kPa]	Pressure resistanc <sup>2)</sup> [kPa]	Air consumption [L/min]	Temperature [°C]	VAC [mm]	SET [mm]
IRV20	air	-100~-1.3	100	0.6(ANR)以下	5~60	φ6	φ6

1) Please note that this item may vary depending on the pressure of the vacuum pump.  
 2) In situations with pressure gauges, once positive pressure is input, the pressure gauge will be damaged. In the case of applying positive pressure, although the vacuum pressure regulating valve is not damaged, the main valve part inside the pressure regulating valve becomes "open", and positive pressure will be input into the vacuum pump, which may malfunction. When using a vacuum pressure regulating valve in the suction handling system, please refer to the following piping example and be careful not to introduce positive pressure into the vacuum pump. In addition, the vacuum valve cannot adjust the positive pressure.



Flow characteristics (representative values)



Pressure characteristics (representative values)

# Vacuum valve

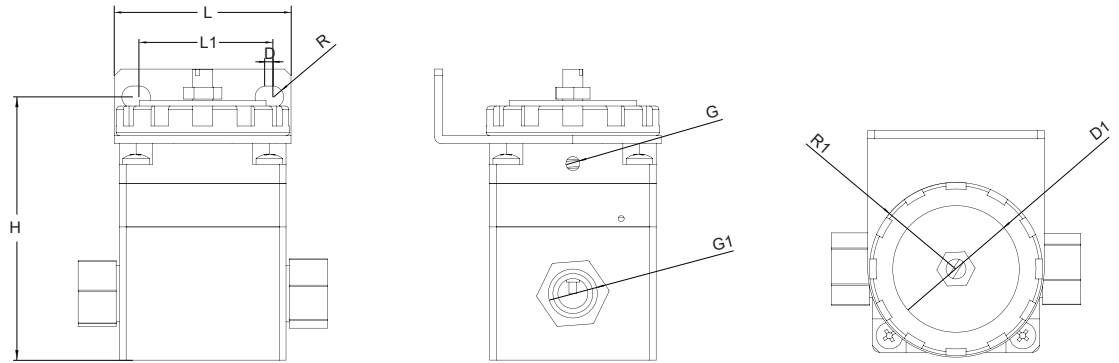
## HIVR

Maximum flow rate: 240L/min(ANR)



Utility

### HIVR Specification



HIVR

Models	L	L1	D	D1	R	R1	H	G	G1
IRV20	53	40	2	38	3.30	26	79	M5	G3/8