

## Auxiliary components

### Spring buffer rod HSPA

Buffer stroke 25mm/50mm/75mm

# HANWHA



Utility

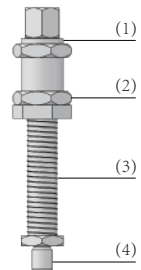
### Product characteristics

- \*Bottom with buffer spring rod
- \*The spring buffer rod is composed of high-strength stainless steel rods and high-quality sliding bearings
- \*Handling workpieces with height differences in the suction plane, or side suction workpieces
- \*Handling pressure sensitive workpieces (such as glass) to ensure flexible contact



### Product structure

- \*The spring buffer support rod is composed of high-strength stainless steel rod, bearing sleeve (1), and lower buffer spring (3)
- \*The thread (4) connecting the suction cup usually has different specifications for external threaded fittings
- \*Two locking nuts (2) are used for reinforcement



### Product advantages

- \*Flexible contact with vulnerable workpieces, compensating for height differences in adjustable workpieces
- \*Basically suitable for all sizes of suction cups, with a wide range of applications
- \*Optional anti rotation function



\* HSPA case

# Auxiliary components

## Spring buffer rod HSPA

**HANWHA**



Utility

Buffer stroke 25mm/50mm/75mm

### HSPA Ordering NO

HSPA	25	M18	MG01
1	2	3	4

#### 1-Series

HSPA	Solid external spring buffer rod
------	----------------------------------

#### 2-Spring rod travel

25	25mm
50	50mm
75	75mm

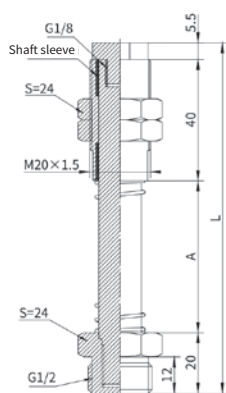
#### 3-Guide sleeve external thread

M20	M20X1.5
M18	M18X1

#### 4-Connection bottom thread

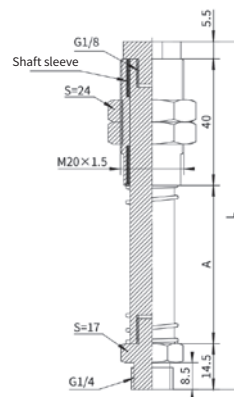
M external thread	G02-G1/4 G04-G1/2
-------------------	----------------------

### HSPA Design Data



HSPA-25-M20-MG04  
① ②

① Buffer stroke	A	L	② External thread
25	50	115.5	M20/M18
50	70	135.5	M20/M18
75	94	159.5	M20/M18



HSPA-25-M20-MG02  
① ②

① Buffer stroke	A	L	② External thread
25	50	110	M20/M18
50	70	130	M20/M18
75	94	154	M20/M18