

Special suction HVG

Vacuum pressure reached : -85Kpa

HANWHA



Utility

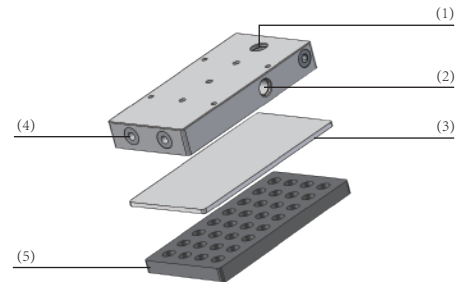
Product characteristics

- *Suitable for packaging processes, handling packaging boxes and other types of packaging products
- *Small in size and light in weight, suitable for integration into packaging machinery such as packing machines
- *Can be used with end picks to transport easily bent workpieces such as metal plates and plywood
- *The suction device is equipped with a built-in vacuum generating unit



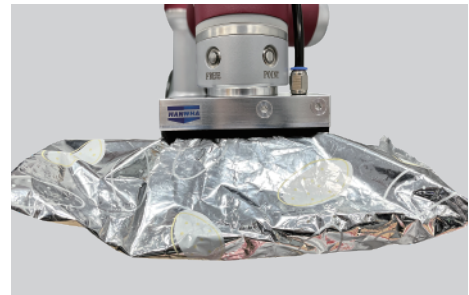
Product structure

- *(1) Installation holes
- *(2) P: G1/8 screw thread, air inlet
- *(3) Vacuum valve
- *(4) Imported sealing sponge pad
- *(5) The instrument contains a high-quality generator inside



Product advantages

- *Suitable for various occasions that require air blowing and have a short working cycle, such as plastic sheets, automotive industry, packaging machinery, and industrial robots



*HVG case

Special suction HVG

HANWHA



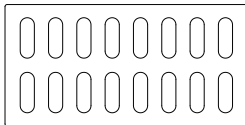
Vacuum pressure reached : -85Kpa

HVG Ordering NO

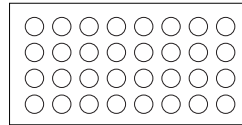
| | | | | | |
|-----|-----|----|---|---|---|
| HVG | 120 | 60 | V | 4 | F |
| 1 | 2 | 3 | 4 | 5 | 6 |
| 15 | | | | | |
| 7 | | | | | |

| | | |
|---------------------------|--------------------|-----------------------|
| 1-Series | 2- Sponge length | 3-Suction tool width |
| HVG Sponge suction tool | 120 120mm | 60 60mm |
| 4- Specifications | 5-Sponge pore type | 6-Type of suction pad |
| V Self closing valve | 2 PE02 | F Sponge |
| L Flow valve | 3 PE03 | |
| | 4 PE04 | |
| | 5 PE05 | |
| 7- Sponge thickness | | |
| 15 15mm | | |

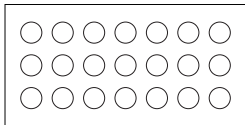
HVG120 Sponge Ordering NO



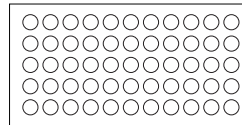
HVGP120X60 Standards
Type:PE02
Need to be customized



HVGP120X60 Standards
Type:PE04
Need to be customized



HVGP120X60 Standards
Type:PE03
Universal type



HVGP120X60 Standards
Type:PE05
Need to be customized

Special suction HVG

Vacuum pressure reached : -85Kpa

HANWHA



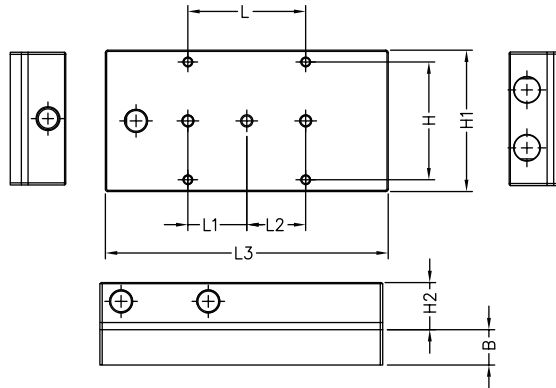
Utility

HVG Technical Data

| Models | Use fluid | Suction N [-60KPA] | Intake pressure [Mpa] | Air consumption [L/Min] | Vacuum pressure reached [-Kpa] | Sponge aperture [mm] | Sponge pore number | Weight [Kg] |
|-------------------|-----------|-----------------------|-----------------------------|-------------------------------|--------------------------------------|----------------------------|-----------------------|----------------|
| HVG-120-60-V-2F** | air | 124 | 0.5 | 70 | 85 | 7X20 | 16 | 0.6 |
| HVG-120-60-L-2F** | air | 124 | 0.5 | 70 | 85 | 7X20 | 16 | 0.4 |
| HVG-120-60-V-3F** | air | 100 | 0.5 | 70 | 85 | 10 | 21 | 0.6 |
| HVG-120-60-L-3F** | air | 100 | 0.5 | 70 | 85 | 10 | 21 | 0.4 |
| HVG-120-60-V-4F** | air | 96 | 0.5 | 70 | 85 | 8 | 32 | 0.6 |
| HVG-120-60-L-4F** | air | 96 | 0.5 | 70 | 85 | 8 | 32 | 0.4 |
| HVG-120-60-V-5F** | air | 41 | 0.5 | 70 | 85 | 4 | 55 | 0.6 |
| HVG-120-60-L-5F** | air | 41 | 0.5 | 70 | 85 | 4 | 55 | 0.4 |

*Vacuum degree is the reference value - please refer to the actual vacuum source performance value for the Kpa of the vacuum suction tool

HVG Design Data



HVG120X60

model

| Size[mm] | L | L1 | L2 | L3 | H | H1 | H2 | B (★) |
|-------------------|----|----|----|-----|----|----|----|----------|
| HVG-120-60-V-2F** | 50 | 25 | 25 | 120 | 50 | 60 | 28 | 10/15/20 |
| HVG-120-60-L-2F** | 50 | 25 | 25 | 120 | 50 | 60 | 20 | 10/15/20 |
| HVG-120-60-V-3F** | 50 | 25 | 25 | 120 | 50 | 60 | 28 | 10/15/20 |
| HVG-120-60-L-3F** | 50 | 25 | 25 | 120 | 50 | 60 | 20 | 10/15/20 |
| HVG-120-60-V-4F** | 50 | 25 | 25 | 120 | 50 | 60 | 28 | 10/15/20 |
| HVG-120-60-L-4F** | 50 | 25 | 25 | 120 | 50 | 60 | 20 | 10/15/20 |
| HVG-120-60-V-5F** | 50 | 25 | 25 | 120 | 50 | 60 | 28 | 10/15/20 |
| HVG-120-60-L-5F** | 50 | 25 | 25 | 120 | 50 | 60 | 20 | 10/15/20 |