

Vacuum Suction Foams HVGP (fan pump)

Suction size: 130mmX wide and long (customizable)

HANWHA



General

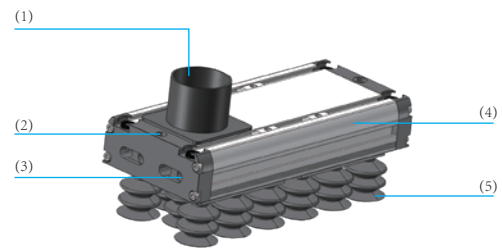
Product characteristics

- * Medium-sized standardized design
- * Convenient and simple maintenance
- * Lightweight and tough high strength aluminum profiles
- * Built-in multistage vacuum generator module
- * HANWHA-specific body technology
- * Different pass technology for a wide variety of workpiece applications
- * High performance imported material, longer service life



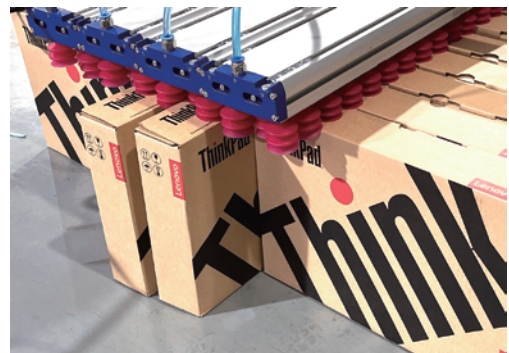
Product structure

- * (1) Fan bump
- * (2) Compressed air intake
- * (3) Exhaust hole with silencer function
- * (4) Aluminum profile can be customized
- * (5) Strong and wear-resistant 2.5 fold suction cup, the material of the sucker is flexible, and it is easy to fit the workpiece



Product advantages

- * Suitable for corrugated board, plywood, iron plate and other general workpieces



Suction Cups HVGP absorbs the carton packaging

Vacuum Suction Foams HVGP (fan pump)

HANWHA



General

Suction size: 130mmX wide and long (customizable)

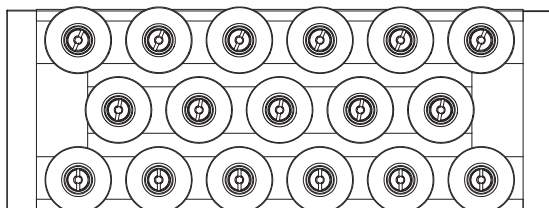
HVGP Order Code

| | | | | | |
|------|-----|------|---|---|---|
| HVGP | 130 | 1265 | V | 3 | S |
| 1 | 2 | 3 | 4 | 5 | 6 |
| 20 | A | | | | |
| 7 | 8 | | | | |

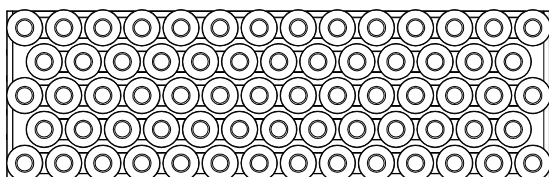
| | | | | | | | | |
|-------------------------------|-------|-----------------------------|-------------------------------|-----|-----------|-------------------|------|--------------|
| 1-Series | HVGP | Cups suction | 2-Width | 130 | 130mm | 3-Length | 1265 | Customizable |
| 4-Vacuum valve specifications | V | Self-closing valve | 5-Design type | 3 | PS03 | 6-Vacuum material | S | Cup |
| | L | Flow valve | | 5 | PS05 | | | |
| | S | High speed valve | | | | | | |
| 7-Size and type | 20 | 20mm | 8-Vacuum source configuration | A | Generator | | | |
| | 40 | 40mm | | E | Fan pump | | | |
| | S | Silicone rubber | | | | | | |
| | SI-RR | High-performance (rose red) | | | | | | |

* Please contact us for special requirements

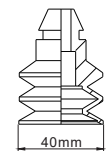
HVGP130 Cup Selection Specification



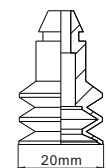
typePS03
The number of rows in use is 3
HVGP130(HSCN40)cup diameter 40MM



typePS05
The number of rows in use is 5
HVGP130(HSCN40)cup diameter 20MM



(HSCN40)



(HSCN20)

Vacuum Suction Foams HVGP (fan pump)

HANWHA



General

Suction size: 130mmX wide and long (customizable)



HVGP130P Technical parameters

| Models | Type | Number of cups | Required pumping capacity* [L/min] | Vacuum* [Kpa] | Suction N* [-40KPA] | Weight [KG] |
|----------------------|------|----------------|------------------------------------|---------------|---------------------|-------------|
| HVGP130-295V-3S40-E | PS03 | 17 | 150 | -40 | 296 | 2.8 |
| HVGP130-434V-3S40-E | PS03 | 26 | 300 | -40 | 452 | 3.6 |
| HVGP130-572V-3S40-E | PS03 | 35 | 400 | -40 | 608 | 4.3 |
| HVGP130-711V-3S40-E | PS03 | 44 | 510 | -40 | 765 | 5.1 |
| HVGP130-849V-3S40-E | PS03 | 53 | 600 | -40 | 921 | 6 |
| HVGP130-988V-3S40-E | PS03 | 62 | 750 | -40 | 1078 | 7 |
| HVGP130-1126V-3S40-E | PS03 | 71 | 850 | -40 | 1234 | 7.7 |
| HVGP130-1265V-3S40-E | PS03 | 80 | 950 | -40 | 1391 | 8.5 |
| HVGP130-1403V-3S40-E | PS03 | 89 | 1050 | -40 | 1547 | 9.3 |
| HVGP130-1542V-3S40-E | PS03 | 98 | 1250 | -40 | 1704 | 10.1 |

*Vacuum degree for reference-Kpa vacuum suction (built-in vacuum generator)
please refer to the actual vacuum source performance values

* PS03

| Models | Type | Number of cups | Required pumping capacity* [L/min] | Vacuum* [Kpa] | Suction N* [-40KPA] | Weight [KG] |
|----------------------|------|----------------|------------------------------------|---------------|---------------------|-------------|
| HVGP130-295V-5S20-E | PS05 | 53 | 150 | -40 | 277 | 2.8 |
| HVGP130-434V-5S20-E | PS05 | 83 | 300 | -40 | 434 | 3.6 |
| HVGP130-572V-5S20-E | PS05 | 114 | 400 | -40 | 591 | 4.3 |
| HVGP130-711V-5S20-E | PS05 | 143 | 510 | -40 | 747 | 5.1 |
| HVGP130-849V-5S20-E | PS05 | 173 | 600 | -40 | 904 | 6 |
| HVGP130-988V-5S20-E | PS05 | 203 | 750 | -40 | 1061 | 7 |
| HVGP130-1126V-5S20-E | PS05 | 233 | 850 | -40 | 1218 | 7.7 |
| HVGP130-1265V-5S20-E | PS05 | 263 | 950 | -40 | 1375 | 8.5 |
| HVGP130-1403V-5S20-E | PS05 | 293 | 1050 | -40 | 1531 | 9.3 |
| HVGP130-1542V-5S20-E | PS05 | 323 | 1250 | -40 | 1688 | 10.1 |

*Vacuum degree for reference-Kpa vacuum suction (built-in vacuum generator)
please refer to the actual vacuum source performance values

* PS05

Vacuum Suction Foams HVGP (fan pump)

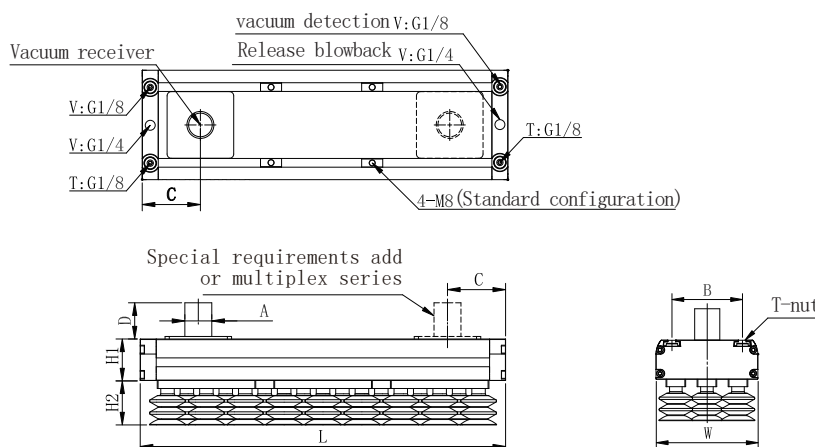
HANWHA



General

Suction size: 130mmX wide and long (customizable)

HVGP Design parameters



HVGP130

尺寸[mm]

| Models | A | B | C | D | H1 | H2 | W | L |
|----------------------|--------|----|----|----|----|----|-----|------|
| HVGP130-295V-3S40-E | 60(32) | 90 | 69 | 54 | 50 | 33 | 130 | 295 |
| HVGP130-434V-3S40-E | 60(32) | 90 | 69 | 54 | 50 | 33 | 130 | 434 |
| HVGP130-572V-3S40-E | 60(32) | 90 | 69 | 54 | 50 | 33 | 130 | 572 |
| HVGP130-711V-3S40-E | 60(32) | 90 | 69 | 54 | 50 | 33 | 130 | 711 |
| HVGP130-849V-3S40-E | 60(32) | 90 | 69 | 54 | 50 | 33 | 130 | 849 |
| HVGP130-988V-3S40-E | 60(32) | 90 | 69 | 54 | 50 | 33 | 130 | 988 |
| HVGP130-1126V-3S40-E | 60(32) | 90 | 69 | 54 | 50 | 33 | 130 | 1126 |
| HVGP130-1265V-3S40-E | 60(32) | 90 | 69 | 54 | 50 | 33 | 130 | 1265 |
| HVGP130-1403V-3S40-E | 60(32) | 90 | 69 | 54 | 50 | 33 | 130 | 1403 |
| HVGP130-1542V-3S40-E | 60(32) | 90 | 69 | 54 | 50 | 33 | 130 | 1542 |

*PS03

尺寸[mm]

| Models | A | B | C | D | H1 | H2 | W | L |
|----------------------|--------|----|----|----|----|----|-----|------|
| HVGP130-295V-5S20-E | 60(32) | 90 | 69 | 54 | 50 | 31 | 130 | 295 |
| HVGP130-434V-5S20-E | 60(32) | 90 | 69 | 54 | 50 | 31 | 130 | 434 |
| HVGP130-572V-5S20-E | 60(32) | 90 | 69 | 54 | 50 | 31 | 130 | 572 |
| HVGP130-711V-5S20-E | 60(32) | 90 | 69 | 54 | 50 | 31 | 130 | 711 |
| HVGP130-849V-5S20-E | 60(32) | 90 | 69 | 54 | 50 | 31 | 130 | 849 |
| HVGP130-988V-5S20-E | 60(32) | 90 | 69 | 54 | 50 | 31 | 130 | 988 |
| HVGP130-1126V-5S20-E | 60(32) | 90 | 69 | 54 | 50 | 31 | 130 | 1126 |
| HVGP130-1265V-5S20-E | 60(32) | 90 | 69 | 54 | 50 | 31 | 130 | 1265 |
| HVGP130-1403V-5S20-E | 60(32) | 90 | 69 | 54 | 50 | 31 | 130 | 1403 |
| HVGP130-1542V-5S20-E | 60(32) | 90 | 69 | 54 | 50 | 31 | 130 | 1542 |

*PS05