

Vacuum Generator

ECO

Maximum vacuum flow: 94-Kpa

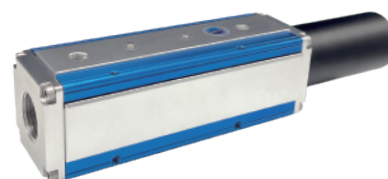
HANWHA



Utility

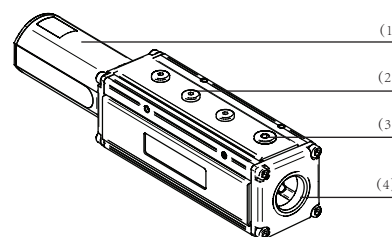
Product characteristics

- *The vacuum generator body is made of aluminum oxide
- *Multi stage vacuum tubes can meet the vacuum flow rate in different situations, thereby improving the vacuum degree.
- The vacuum interface is threaded G3/4



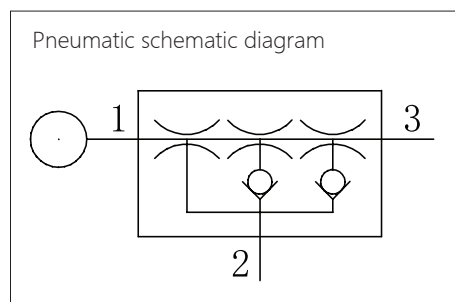
Product structure

- *Main body: Made of aluminum, small in size and light in weight
- * (1) Silencer: made of anodized aluminum oxide
- * (2) V: G1/8 vacuum detection port
- * (3) P: G1/4 compressed air inlet
- * (4) V: G1 vacuum connection port



Product advantages

- *Modular, fast and convenient installation design, vacuum system with advantages such as economic efficiency and reliable operation, can greatly simplify the selection and work of vacuum systems. Provide customers with more convenience.



Vacuum Generator

ECO

HANWHA


Utility

Maximum vacuum flow: 94-Kpa

ECO-H6010 Ordering NO

ECO	-	H6010	-	M	-	01	-	S
1		2		3		4		5

1-Series	ECO	Vacuum generator	2-Model	H6010	3-Specifications	H	High vacuum
						M	Low intake
						L	Low vacuum
4- Number of vacuum tubes	01~04	1-4 occurrence canals	5-Silencer	S	No silencer		With silencer

ECO-H6010 Technical Data

Models	Use fluid	Temperature [°C]	Intake pressure [Mpa]	Air consumption [L/Min]	Vacuum pressure reached [-KPa]	Maximum vacuum flow [L/Min]
ECO-H6010-H01-S	air	0~60	0.5	120	94	372
ECO-H6010-H02-S	air	0~60	0.5	240	94	744
ECO-H6010-H03-S	air	0~60	0.5	360	94	1116
ECO-H6010-H04-S	air	0~60	0.5	480	94	1488
ECO-H6010-L01-S	air	0~60	0.5	90	70	342
ECO-H6010-L02-S	air	0~60	0.5	180	70	684
ECO-H6010-L03-S	air	0~60	0.5	270	70	1026
ECO-H6010-L04-S	air	0~60	0.5	360	70	1368
ECO-H6010-M01-S	air	0~60	0.31	120	90	336
ECO-H6010-M02-S	air	0~60	0.31	240	90	672
ECO-H6010-M03-S	air	0~60	0.31	360	90	1008
ECO-H6010-M04-S	air	0~60	0.31	480	90	1344

Vacuum Generator ECO



Utility

Maximum vacuum flow: 94-Kpa

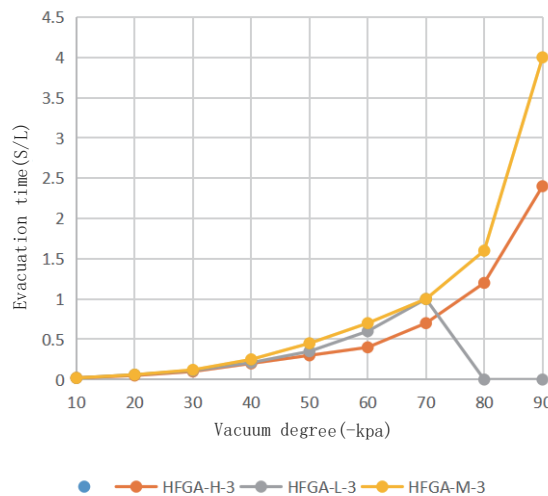
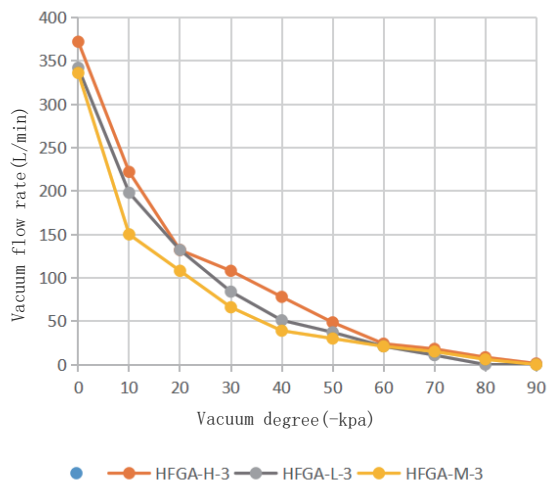
Vacuum flow rate (L/min) for different vacuum degrees (- kpa)

Models	0	10	20	30	40	50	60	70	80	90
ECO-H6010-H	372	222	132	108	78	48.6	24	18	8.4	1.2
ECO-H6010-L	342	198	132	84	51	37.2	21	10.8	0	0
ECO-H6010-M	336	150	108	66	39	30	21	15	6	0

Extraction time (S/L) for different vacuum degrees (- kpa)

Models	10	20	30	40	50	60	70	80	90
ECO-H6010-H	0.02	0.05	0.1	0.2	0.3	0.4	0.7	1.2	2.4
ECO-H6010-L	0.02	0.06	0.11	0.21	0.35	0.6	1	0	0
ECO-H6010-M	0.02	0.06	0.12	0.25	0.45	0.7	1	1.6	4

Performance parameter



Vacuum Generator

ECO

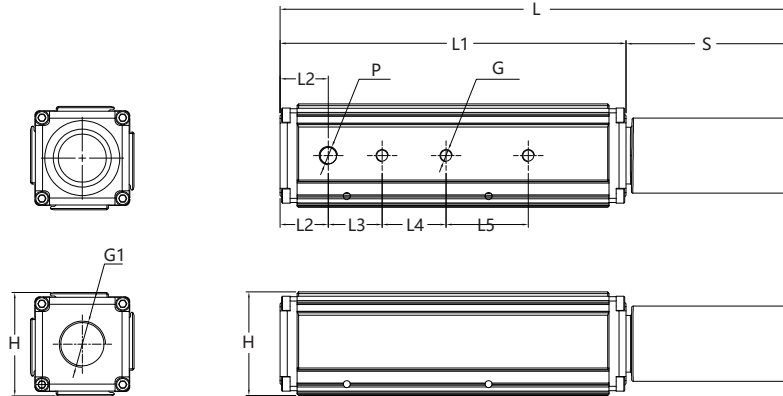
HANWHA


Utility

Maximum vacuum flow:94-Kpa



ECO-H6010 Design Data



ECO-H6010

model

Size[mm]	L	L1	L2	L3	L4	L5	H	P	G	G1	S
ECO-H6010-H01-S	331	214	34	38	45	58	73	G1/4"	3-G1/8"	G1	Silencer
ECO-H6010-H02-S	331	214	34	38	45	58	73	G1/4"	3-G1/8"	G1	Silencer
ECO-H6010-H03-S	331	214	34	38	45	58	73	G1/4"	3-G1/8"	G1	Silencer
ECO-H6010-H04-S	331	214	34	38	45	58	73	G1/4"	3-G1/8"	G1	Silencer
ECO-H6010-L01-S	331	214	34	38	45	58	73	G1/4"	3-G1/8"	G1	Silencer
ECO-H6010-L02-S	331	214	34	38	45	58	73	G1/4"	3-G1/8"	G1	Silencer
ECO-H6010-L03-S	331	214	34	38	45	58	73	G1/4"	3-G1/8"	G1	Silencer
ECO-H6010-L04-S	331	214	34	38	45	58	73	G1/4"	3-G1/8"	G1	Silencer
ECO-H6010-M01-S	331	214	34	38	45	58	73	G1/4"	3-G1/8"	G1	Silencer
ECO-H6010-M02-S	331	214	34	38	45	58	73	G1/4"	3-G1/8"	G1	Silencer
ECO-H6010-M03-S	331	214	34	38	45	58	73	G1/4"	3-G1/8"	G1	Silencer
ECO-H6010-M04-S	331	214	34	38	45	58	73	G1/4"	3-G1/8"	G1	Silencer