

Suction Cups

HAB

1.5 fold the corrugated suction cup

HANWHA



Glass



anti-slip



Metal



Oil proof

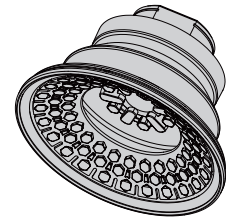
Product characteristics

- * Used for fast handling of sheet metal
- * The sheet metal is handled without dents or deformations
- * The corrugated shape fits well with the workpiece
- * Handling systems for stamping production lines in the automotive industry
- * The bottom of the sucker has a special groove structure to prevent the oily metal plate from sliding during handling, ensuring accurate positioning of the workpiece in the press



Product structure

- * Rugged, wear-resistant 1.5 fold corrugated suction cup HAB, made of NBR material, with special grooves and internal support structure
- * The suction cups and joints are fixed by vulcanization
- * Suction cups are available in a variety of connection forms



Product advantages

- * Suitable for workpieces of different shapes and sizes
- * Perfect fit with uneven workpiece surface, with good sealing and cushioning performance
- * Strong horizontal and lateral grasping power
- * Does not cause workpiece deformation, even when handling metal sheets with oily surfaces can still provide strong anti-slip side forces



*HAB suction cups transport concave and convex workpiece surfaces

Suction Cups

HAB

1.5 fold the corrugated suction cup

HANWHA



Glass



anti-slip



Metal



Oil proof



HAB Ordering NO

HAB	22	FG02	NBR
1	2	3	4

1-Series		2-Diameter		3-Screw thread	
HAB	Suction Cup	22~125	22mm~125mm	F Internal thread	G02-G1/4 G03-G3/8
				M External thread	G02-G1/4 G03-G3/8

4-Material ⁽¹⁾	
NBR	Nitrile rubber
HT1	High temperature material(blue)
HT2	High temperature material(black)

(1)Other materials can also be made, please contact us



HAB Selection specification

Models	F-G02-G1/4	F-G03-G3/8	M-G02-G1/4	M-G03-G3/8
HAB22	◎		◎	
HAB30	◎		◎	
HAB40	◎		◎	
HAB50	◎	◎	◎	
HAB60	◎	◎	◎	
HAB80	◎	◎	◎	
HAB100	◎	◎	◎	
HAB125	◎	◎	◎	

Suction Cups

HAB

1.5 fold the corrugated suction cup

HANWHA



Glass



anti-slip



Metal



Oil proof



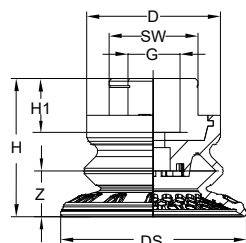
HAB Technical Data

Models	Suction [N] ⁽²⁾	Lateral force [N] ⁽²⁾	Oily surface lateral force [N] ⁽²⁾	Inner volume [cm ³]
HAB-22-**-**	16	18	6	2.5
HAB-30-**-**	22	30	13	5.7
HAB-40-**-**	38	36	33	8.7
HAB-50-**-**	53	55	52	16.1
HAB-60-**-**	82	82	77	28.8
HAB-80-**-**	135	145	140	67.6
HAB-100-**-**	190	220	214	115
HAB-125-**-**	250	352	335	220

(2)The surface of the workpiece is smooth and dry, and the vacuum degree is -60KPa. The above data does not include the safety factor. Depending on the surface condition of the workpiece, the value may change.



HAB Design Data



Size[mm]⁽³⁾

Models	D	H	H1	G	DS	SW	Z	Weight [g]
HAB22-FG02	24.5	25	12	G1/4"	21	SW16	5.8	9.06
HAB30--FG02	26.5	28	12	G1/4"	32	SW17	9	13.51
HAB40-FG02	26	29	15	G1/4"	42	SW17	10	15.07
HAB50-FG03	37	37	15	G3/8"	52	SW22	11.5	35.17
HAB60-FG03	38	41.5	15	G3/8"	63	SW22	14.5	41.35
HAB80-FG03	40	50	15	G3/8"	83	SW22	22	63.38
HAB100-FG03	40.8	57	15	G3/8"	103	SW22	26	100.42
HAB125-FG03	54	68	15	G3/8"	128	SW22	32	168.87

HAB22~125 Dimension

Suction Cups

HAB

1.5 fold the corrugated suction cup

HANWHA



Glass



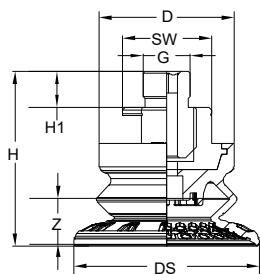
anti-slip



Metal



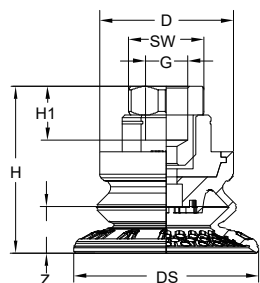
Oil proof



Size[mm]⁽³⁾

Models	D	H	H1	G	DS	SW	Z	Weight [g]
HAB22-MG02	24.5	34	9	G1/4	21	SW16	5.8	13.74
HAB30-MG02	26.5	37	9	G1/4	32	SW17	9	13.74
HAB40-MG02	26	38	9	G1/4	42	SW17	10	19.75
HAB50-MG02	37	46	9	G1/4	52	SW22	11.5	43.37
HAB60-MG02	38	50.5	9	G1/4	63	SW22	14.5	49.55
HAB80-MG02	40	59	9	G1/4	83	SW22	22	71.58
HAB100-MG02	40.8	66	9	G1/4	103	SW22	26	108.62
HAB125-MG02	54	77	9	G1/4	128	SW22	32	177.07

HAB22~125 External thread



Size[mm]⁽³⁾

Models	D	H	H1	G	DS	SW	Z	Weight [g]
HAB50-FG02	37	46	15	G1/4	52	SW22	11.5	51.19
HAB60-FG02	38	50.5	15	G1/4	63	SW22	14.5	57.37
HAB80-FG02	40	59	15	G1/4	83	SW22	22	79.4
HAB100-FG02	40.8	66	15	G1/4	103	SW22	26	116.44
HAB125-FG02	54	77	15	G1/4	128	SW22	32	184.89

HAB50~125 Internal thread

(3) Compliant with DIN ISO 3302-1 M3 rubber parts allowable dimensional tolerances. Z is the trip

Suction Cups

HAB

1.5 fold the corrugated suction cup

HANWHA



Glass



anti-slip



Metal



Oil proof

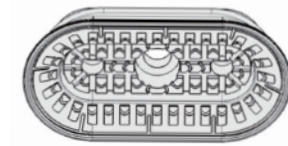
Product characteristics

- * Used for fast handling of sheet metal
- * The sheet metal is handled without dents or deformations
- * The corrugated shape fits well with the workpiece
- * Handling systems for stamping production lines in the automotive industry
- * The bottom of the sucker has a special groove structure to prevent the oily metal plate from sliding during handling, ensuring accurate positioning of the workpiece in the press



Product structure

- * Rugged, wear-resistant 1.5 fold corrugated suction cup HAB, made of NBR material, with special grooves and internal support structure
- * The suction cups and joints are fixed by vulcanization
- * Suction cups are available in a variety of connection forms



Product advantages

- * Suitable for workpieces of different shapes and sizes
- * Perfect fit with uneven workpiece surface, with good sealing and cushioning performance
- * Strong horizontal and lateral grasping power
- * Does not cause workpiece deformation, even when handling metal sheets with oily surfaces can still provide strong anti-slip side forces



*HAB suction cups carry long workpiece surfaces

Suction Cups

HAB

1.5 fold the corrugated suction cup

HANWHA



Glass



anti-slip



Metal



Oil proof



HAB Order Code

HAB	22	FG02	NBR
1	2	3	4

1-Series	2-Diameter	3-Screw thread
HAB	Suction Cup	F Internal thread
	60×30	G01-G1/8
	60×30~140×70mm	G02-G1/4
		M External thread
		G02-G1/4

4-Material ⁽¹⁾	
NBR	Silicone rubber
HT1	High temperature material(blue)
HT2	High temperature material(black)

(1)Other materials can also be made, please contact us



HAB Selection Specifications

Models	F-G01-G1/8	F-G02-G1/4	M-G02-G1/4
HAB60X30		⊙	⊙
HAB80X40		⊙	⊙
HAB110X55		⊙	⊙
HAB140X70		⊙	⊙



HAB Technical Parameters

Models	Suction [N] ⁽²⁾	Lateral force [N] ⁽²⁾	Oily surface lateral force [N]	Inner volume [cm ³]
HAB60X30	38	73	42	10.5
HAB80X40	65	153	74	21.8
HAB110X55	110	299	124	53.1
HAB140X70	165	473	246	106.0

(2)The surface of the workpiece is smooth and dry, and the vacuum degree is -60KPa. The above data does not include the safety factor. Depending on the surface condition of the workpiece, the value may change.



Suction Cups

HAB

1.5 fold the corrugated suction cup

HANWHA



Glass



anti-slip



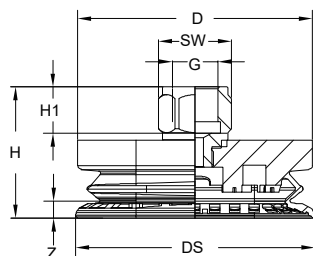
Metal



Oil proof



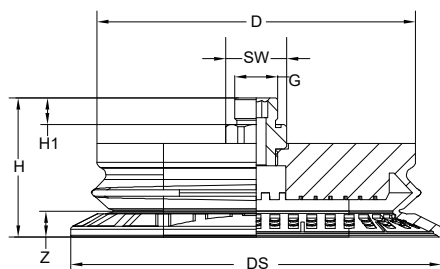
HAB Design Parameters



Size[mm]⁽³⁾

Models	D	H	H1	G	SW	DS	Z	Weight [g]
HAB60X30-FG02	62	34.5	8	G1/4"	SW17	63	7	34.81
HAB80X40-FG02	67	37.2	8	G1/4"	SW17	82	9	42.49
HAB110X55-FG02	96.5	43.5	9	G1/4"	SW17	112	13	91.12
HAB140X70-FG02	111	47.5	9	G1/4"	SW17	143	16.5	139.53

HAB60×30~140×70 Internal thread



Size[mm]⁽³⁾

Models	D	H	H1	G	SW	DS	Z	Weight [g]
HAB60X30-FG02	62	33.8	8	G1/4"	SW17	63	7	33.82
HAB80X40-FG02	67	37	8	G1/4"	SW17	82	9	41.5
HAB110X55-FG02	96.5	42.3	8	G1/4"	SW17	112	13	92.09
HAB140X70-FG02	111	46.8	8	G1/4"	SW17	143	16.5	140.5

HAB60×30~140×70 External thread

(3) Compliant with DIN ISO 3302-1 M3 rubber parts allowable dimensional tolerances. Z is the trip